

For Lease

FLORHAM PARK, NJ

83 Hanover Road

NEWMARK
ASSOCIATES
Commercial Real Estate Services



Available Space

1st Floor:

- Suite 140/160: +/- 5,729 sf
- Private entrance from parking lot
- 1st floor direct access
- 3 interior ADA restrooms
- Multiple offices/group rooms/conference rooms
- See attached floor plan for layout

2nd Floor:

- Suite 210: +/- 2327 sf
- Suite 270: +/- 1603 sf
- Excellent window line
- Ready to be built out
- Aggressive tenant improvement concession package

Lease Price Upon Request

Property/Building Features

- Building Size: +/- 55,000 sf
- Amenities include generous parking, Fed-EX and UPS pick up locations on site
- Well located near hotels, restaurants, shopping, Lifetime Fitness
- Location between Route 10 and Columbia Tpke. on Hanover Ave. Proximate to Route 24, I-78, I-280, and I-287
- Professionally landscaped grounds
- Convenient to Saint Barnabas Medical Center, Summit Medical, Overlook Hospital and Morristown Memorial Hospital
- 2 elevators
- Building website: www.florhamparkmedical.com

Contact Our Exclusive Agent:

Deborah Myers

dmyers@newmarkrealestate.com

C: 973.493.8508

O: 973.884.4444 ext. 15

NewmarkRealEstate.com | 973.884.4444 | 7 E. Frederick Place Suite 500 Cedar Knolls New Jersey 07927

2023 Newmark Associates CRE. Information obtained from sources deemed to be reliable. However, no guarantee, warrant or representation is made as to accuracy of the information presented which is submitted subject to errors, omission, change of price, rental or other conditions, prior sale lease, financing or withdrawal without notice. Projections, opinions, assumptions or estimates are provided for example only, and may not represent current or future performance. Interested parties should consult their tax and legal advisors and conduct a thorough investigation of the property and any prospective transaction.

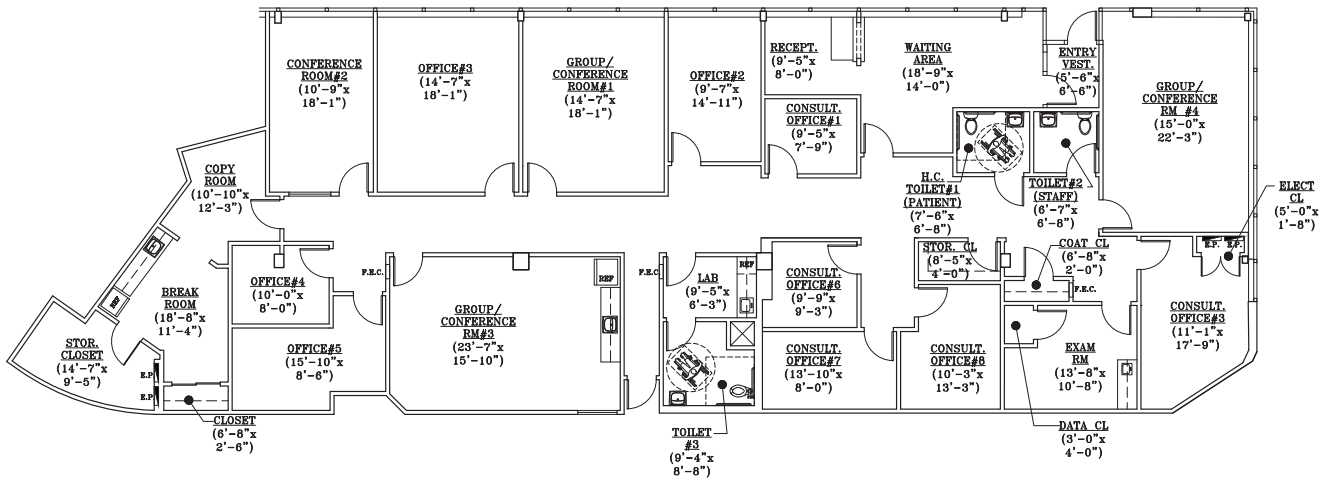
For Lease

FLORHAM PARK, NJ

83 Hanover Road

SUITES# 140 & 160

83 HANOVER ROAD
FLORHAM PARK, NEW JERSEY
5,729 RENTABLE SQ. FT.
WWW.FLORHAMPARMEDICAL.COM



NewmarkRealEstate.com | 973.884.4444 | 7 E. Frederick Place Suite 500 Cedar Knolls New Jersey 07927

2023 Newmark Associates CRE. Information obtained from sources deemed to be reliable. However, no guarantee, warrant or representation is made as to accuracy of the information presented which is submitted subject to errors, omission, change of price, rental or other conditions, prior sale lease, financing or withdrawal without notice. Projections, opinions, assumptions or estimates are provided for example only, and may not represent current or future performance. Interested parties should consult their tax and legal advisors and conduct a thorough investigation of the property and any prospective transaction.