

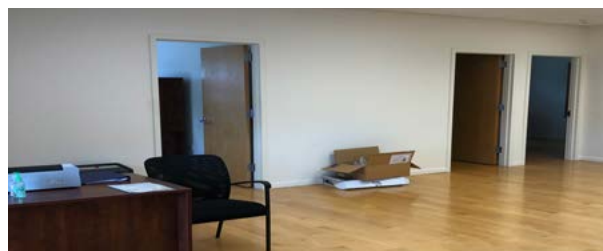
# 64 Route 46 West

PINE BROOK, NJ

NEWMARK  
ASSOCIATES | CRE  
CERTIFIEDWBE

## For Lease

### Office Spaces Available on Route 46



#### Available Spaces

Approx. 3,000 SF Divisible to 1,500 SF

##### Space 1:

- Four Spacious Offices Including a Conference Room
- Private Bathroom
- Kitchenette
- IT Room
- Private Entrance
- Hardwood Floors Throughout

##### Space 2:

- Reception Area with Desk
- Large Open Space with Hardwood Floors
- Washer and Dryer Hook Up
- One (1) Private Office and One (1) Private Bathroom
- Private Entrance
- Perfect for One-On-One Training, Physical Therapy  
Martial Arts or Classroom Environment

#### Property/Building Features

- Located on Rt. 46 with Direct Access to Old Bloomfield Avenue
- Elevator with Handicapped Access
- Great Signage
- Ample Parking
- Large Windows with Natural Light
- Proximity to Route 80, 46, 287
- Restaurants, Shopping
- Zoned Medical

Asking \$16.00 PSF

#### Contact Our Exclusive Agents

**Nancy Stanton-Tuckman**

[ntuckman@newmarkrealestate.com](mailto:ntuckman@newmarkrealestate.com)

Mobile: 973.216.7107

Office: 973.884.4444 ext. 19

**Jeannette Melillo**

[jmelillo@newmarkrealestate.com](mailto:jmelillo@newmarkrealestate.com)

Mobile: 862.227.6464

Office: 973.884.4444 ext. 39



YEARS STRONG

2021 Newmark Associates, CRE, LLC. Information obtained from sources deemed to be reliable. However, no guarantee, warrant or representation is made as to accuracy of the information presented which is submitted subject to errors, omission, change of price, rental or other conditions, prior sale lease, financing or withdrawal without notice. Projections, opinions, assumptions or estimates are provided for example only, and may not represent current or future performance. Interested parties should consult their tax and legal advisors and conduct a thorough investigation of the property and any prospective transaction.

7 E. Frederick Place Suite 500 Cedar Knolls New Jersey 07927 | 973.884.4444 | [NewmarkRealEstate.com](http://NewmarkRealEstate.com)