

11 Central Avenue

WEST ORANGE, NJ

For Sale

Warehouse Space Available



Available Space

- ± 9000sf
- Warehouse/flex
- On-site gated parking and street parking
- Ceiling height 10ft
- 1 Drive in door
- 1 Dock
- Garage

Building Features

- 24/7 Access
- One story building
- Highland Avenue and Orange Commuter Rail
- Rte 280 and Garden State Parkway
- Landscapers, contractors, outdoor storage, tow-truck operators, car auto-service & repair

Call for pricing

For more information contact

Susanne Newmark

snewmark@newmarkrealestate.com

Mobile: 973.879.4542

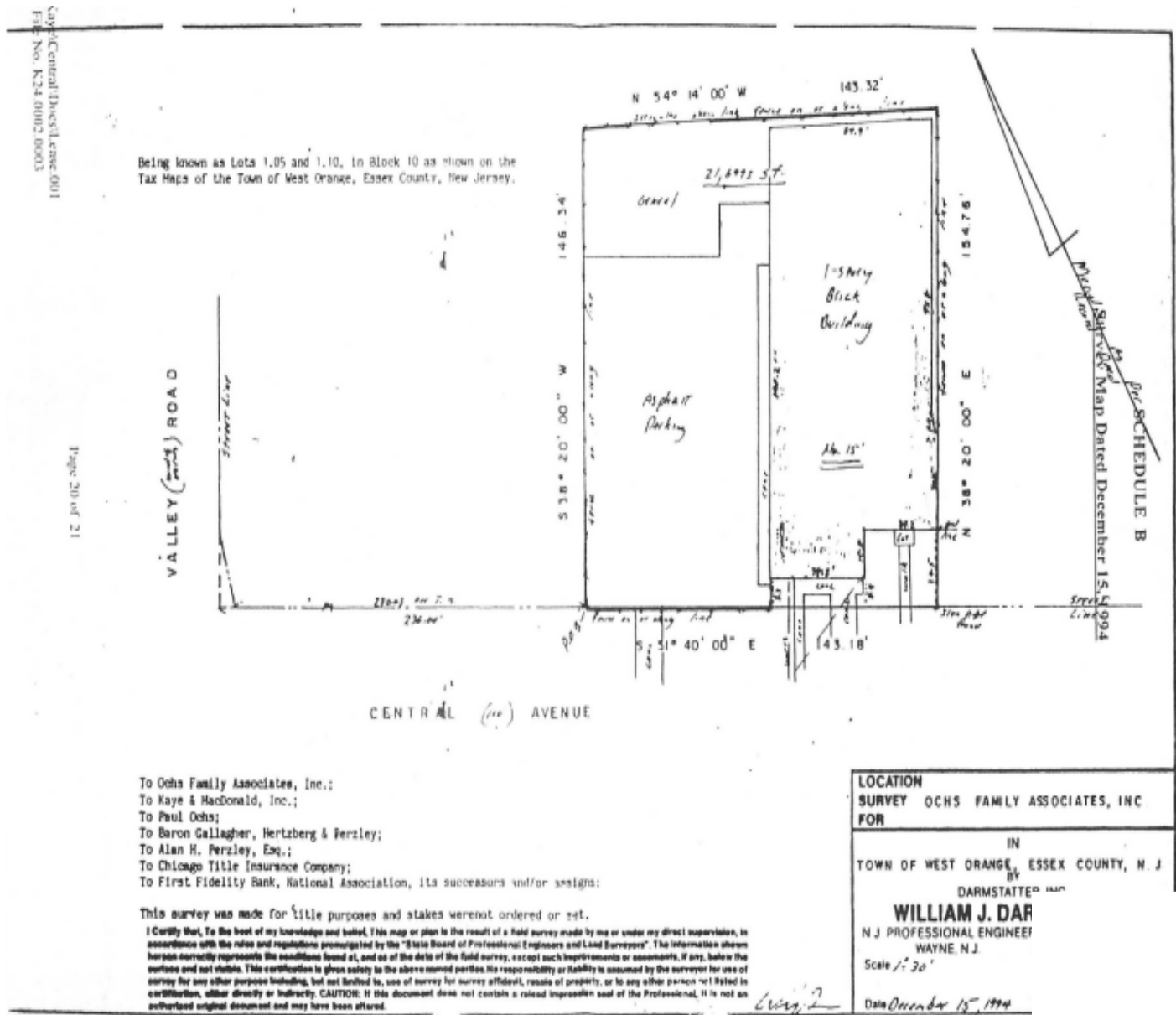
Office: 973.884.4444 ext. 20



7 E. Frederick Place Suite 500 Cedar Knolls New Jersey 07927 | 973.884.4444 | NewmarkRealEstate.com

2022 Newmark Associates CRE. Information obtained from sources deemed to be reliable. However, no guarantee, warrant or representation is made as to accuracy of the information presented which is submitted subject to errors, omission, change of price, rental or other conditions, prior sale lease, financing or withdrawal without notice. Projections, opinions, assumptions or estimates are provided for example only, and may not represent current or future performance. Interested parties should consult their tax and legal advisors and conduct a thorough investigation of the property and any prospective transaction.

Survey Map



7 E. Frederick Place Suite 500 Cedar Knolls New Jersey 07927 | 973.884.4444 | NewmarkRealEstate.com

2022 Newmark Associates CRE. Information obtained from sources deemed to be reliable. However, no guarantee, warrant or representation is made as to accuracy of the information presented which is submitted subject to errors, omission, change of price, rental or other conditions, prior sale lease, financing or withdrawal without notice. Projections, opinions, assumptions or estimates are provided for example only, and may not represent current or future performance. Interested parties should consult their tax and legal advisors and conduct a thorough investigation of the property and any prospective transaction.