

# For Lease

# MONTCLAIR, NJ

## 348-360 Bloomfield Avenue

NEWMARK  
ASSOCIATES  
Commercial Real Estate Services



## Available Space

### Second Floor:

#### Suite 2: Approx. 775 sf

- 2 Large offices
- New AC unit

#### Suite 5: Approx. 800 sf

- Open space with bathroom

Please inquire for pricing

## Building Features

- Located in the heart of Montclair on busy Bloomfield Avenue
- 2 story building
- Many windows with natural light
- Convenient to shopping, banking and restaurants
- Located next to the Wellmont Theatre and neighboring 200 unit luxury apartments
- 4 Minutes to Garden State Parkway
- Close proximity to train station
- On NJ Transit Bus Route
- C-1 Zoning (click link) [C-1](#) includes recreational uses



## For More Information Contact:

### Dennis Giammetta

[dgiammetta@newmarkrealestate.com](mailto:dgiammetta@newmarkrealestate.com)

C: 201.456.7742

O: 973.884.4444 ext. 38

### Meryl Ehrenkranz

[mehrenkranz@newmarkrealestate.com](mailto:mehrenkranz@newmarkrealestate.com)

C: 973.216.7221

O: 973.884.4444 ext. 17

NewmarkRealEstate.com | 973.884.4444 | 7 E. Frederick Place Suite 500 Cedar Knolls New Jersey 07927

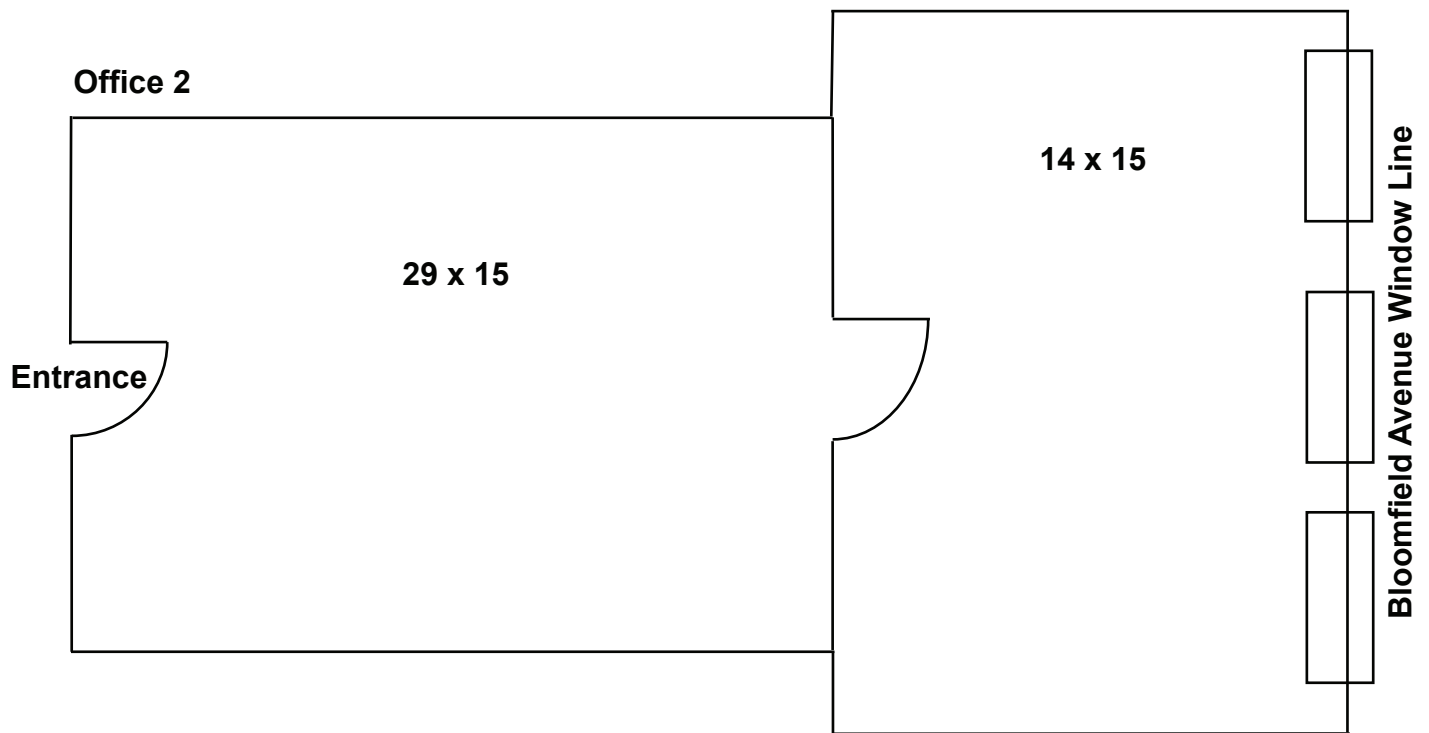
2023 Newmark Associates CRE. Information obtained from sources deemed to be reliable. However, no guarantee, warrant or representation is made as to accuracy of the information presented which is submitted subject to errors, omission, change of price, rental or other conditions, prior sale lease, financing or withdrawal without notice. Projections, opinions, assumptions or estimates are provided for example only, and may not represent current or future performance. Interested parties should consult their tax and legal advisors and conduct a thorough investigation of the property and any prospective transaction.

For Lease

**MONTCLAIR, NJ**

**348-360 Bloomfield Avenue**

**NEWMARK**  
ASSOCIATES  
Commercial Real Estate Services



Floor Plan May Not Be Drawn To Scale

**NewmarkRealEstate.com | 973.884.4444 | 7 E. Frederick Place Suite 500 Cedar Knolls New Jersey 07927**

2023 Newmark Associates CRE. Information obtained from sources deemed to be reliable. However, no guarantee, warrant or representation is made as to accuracy of the information presented which is submitted subject to errors, omission, change of price, rental or other conditions, prior sale lease, financing or withdrawal without notice. Projections, opinions, assumptions or estimates are provided for example only, and may not represent current or future performance. Interested parties should consult their tax and legal advisors and conduct a thorough investigation of the property and any prospective transaction.