

# 348 - 360 Bloomfield Ave.

MONTCLAIR, NJ

NEWMARK  
ASSOCIATES  
Commercial Real Estate Services

## For Lease



### Available Space

Second Floor:

Suite 1: Approx. 1000sf

- 2 Large offices
- 1 Large reception
- Bathroom

Suite 2: Approx. 700sf

- 2 Large offices

*(Suites 1 & 2 can be combined)*

Suite 4: Approx. 1000sf

- 3 Large offices
- Waiting area

Loft 1: Approx. 1000 sf

- 2 Large rooms
- Perfect for dance, yoga or photography studio user

Please inquire for pricing

### Building Features

- Located in the heart of Montclair on busy Bloomfield Avenue
- 2 Story building
- Many windows with natural light
- Convenient to shopping, banking and restaurants
- 4 Minutes to Garden State Parkway
- Close proximity to train station
- On NJ Transit Bus Route
- C-1 Zoning (click link) [C-1](#) includes recreational uses



### For More Information Contact

**Meryl Ehrenkranz**

[mehrenkranz@newmarkrealestate.com](mailto:mehrenkranz@newmarkrealestate.com)

Mobile: 973.216.7221

Office: 973.884.4444 ext. 17

**Jeannette Melillo**

[jmelillo@newmarkrealestate.com](mailto:jmelillo@newmarkrealestate.com)

Mobile: 862.227.6464

Office: 973.884.4444 ext. 39

**7 E. Frederick Place Suite 500 Cedar Knolls New Jersey 07927 | 973.884.4444 | [NewmarkRealEstate.com](http://NewmarkRealEstate.com)**

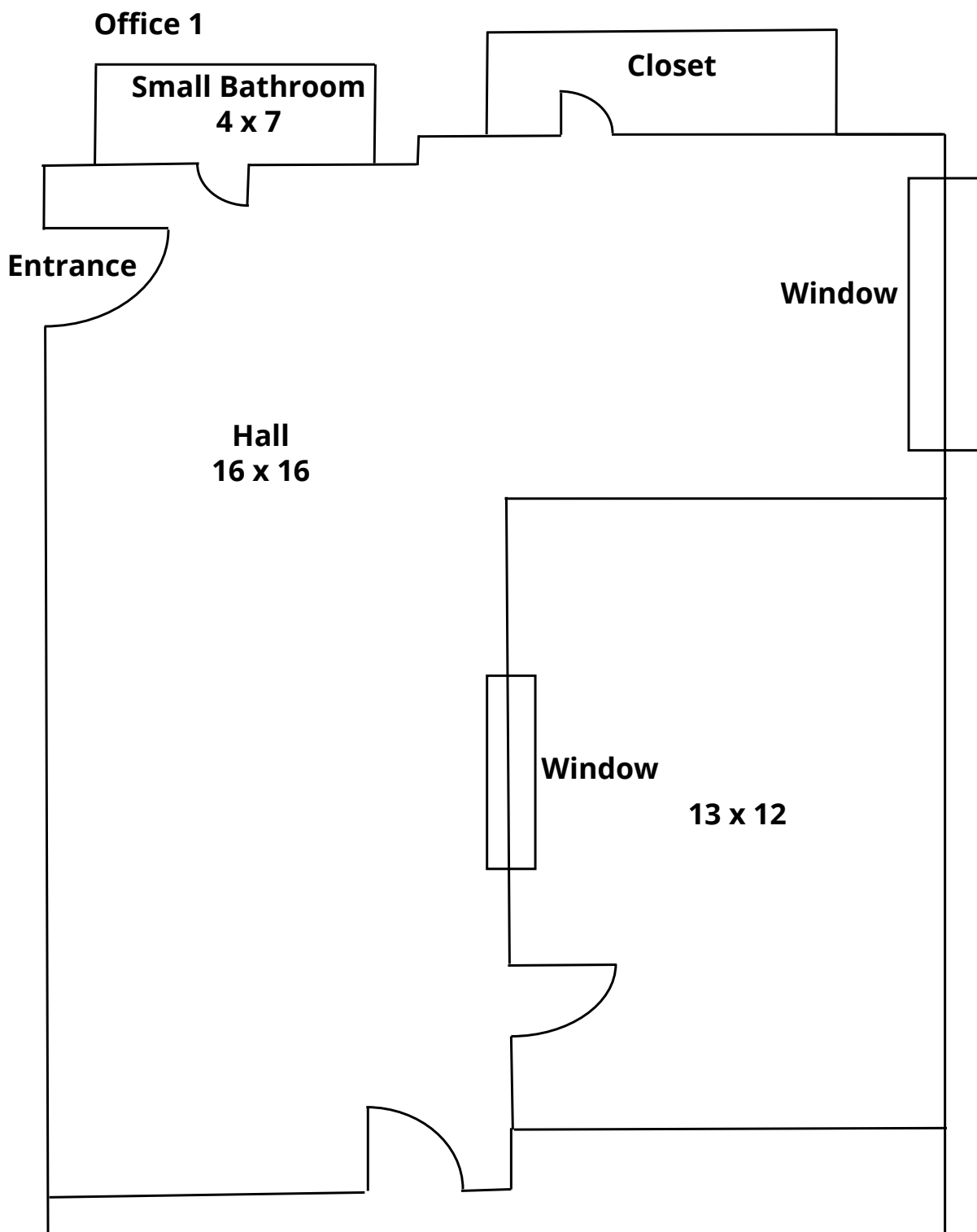
2022 Newmark Associates CRE. Information obtained from sources deemed to be reliable. However, no guarantee, warrant or representation is made as to accuracy of the information presented which is submitted subject to errors, omission, change of price, rental or other conditions, prior sale lease, financing or withdrawal without notice. Projections, opinions, assumptions or estimates are provided for example only, and may not represent current or future performance. Interested parties should consult their tax and legal advisors and conduct a thorough investigation of the property and any prospective transaction.

**348 - 360 Bloomfield Ave.**

**MONTCLAIR, NJ**

**NEWMARK**  
ASSOCIATES | CRE  
CERTIFIEDWBE

**For Lease**



**7 E. Frederick Place Suite 500 Cedar Knolls New Jersey 07927 | 973.884.4444 | [NewmarkRealEstate.com](https://www.NewmarkRealEstate.com)**

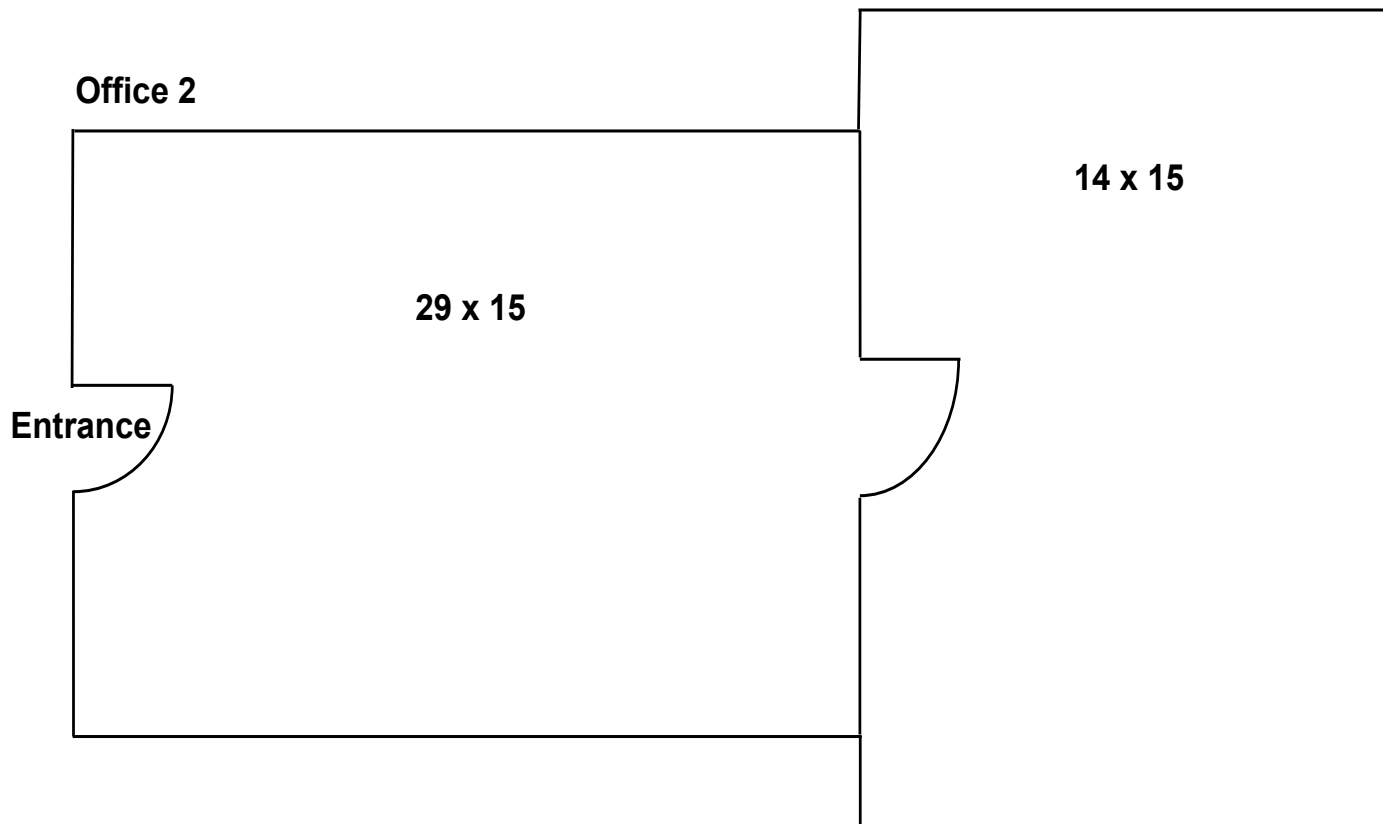
2022 Newmark Associates CRE. Information obtained from sources deemed to be reliable. However, no guarantee, warrant or representation is made as to accuracy of the information presented which is submitted subject to errors, omission, change of price, rental or other conditions, prior sale lease, financing or withdrawal without notice. Projections, opinions, assumptions or estimates are provided for example only, and may not represent current or future performance. Interested parties should consult their tax and legal advisors and conduct a thorough investigation of the property and any prospective transaction.

**348 - 360 Bloomfield Ave.**

**MONTCLAIR, NJ**

**NEWMARK**  
ASSOCIATES | CRE  
CERTIFIED WBE

**For Lease**



**7 E. Frederick Place Suite 500 Cedar Knolls New Jersey 07927 | 973.884.4444 | [NewmarkRealEstate.com](https://www.NewmarkRealEstate.com)**

2022 Newmark Associates CRE. Information obtained from sources deemed to be reliable. However, no guarantee, warrant or representation is made as to accuracy of the information presented which is submitted subject to errors, omission, change of price, rental or other conditions, prior sale lease, financing or withdrawal without notice. Projections, opinions, assumptions or estimates are provided for example only, and may not represent current or future performance. Interested parties should consult their tax and legal advisors and conduct a thorough investigation of the property and any prospective transaction.

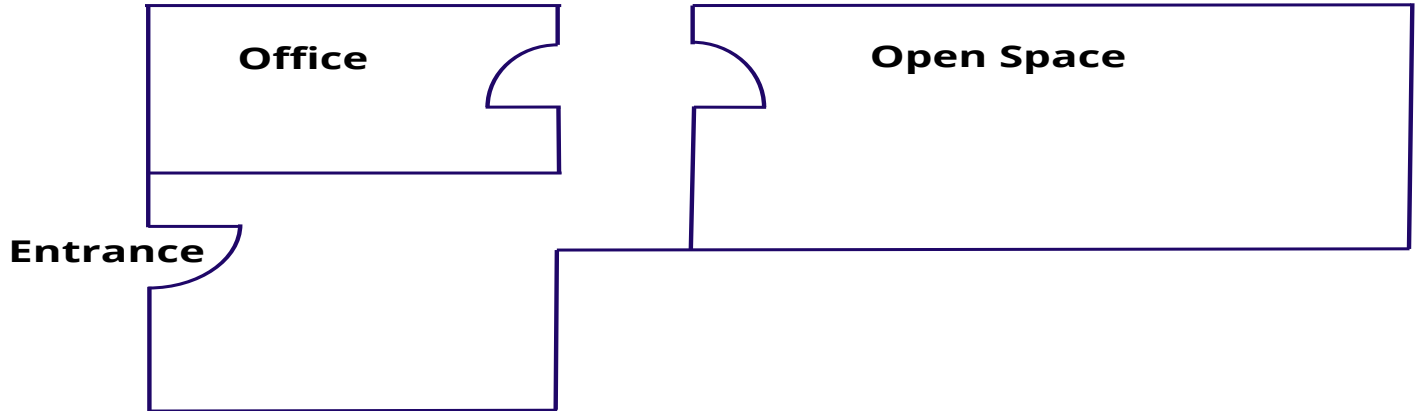
**348 - 360 Bloomfield Ave.**

**MONTCLAIR, NJ**

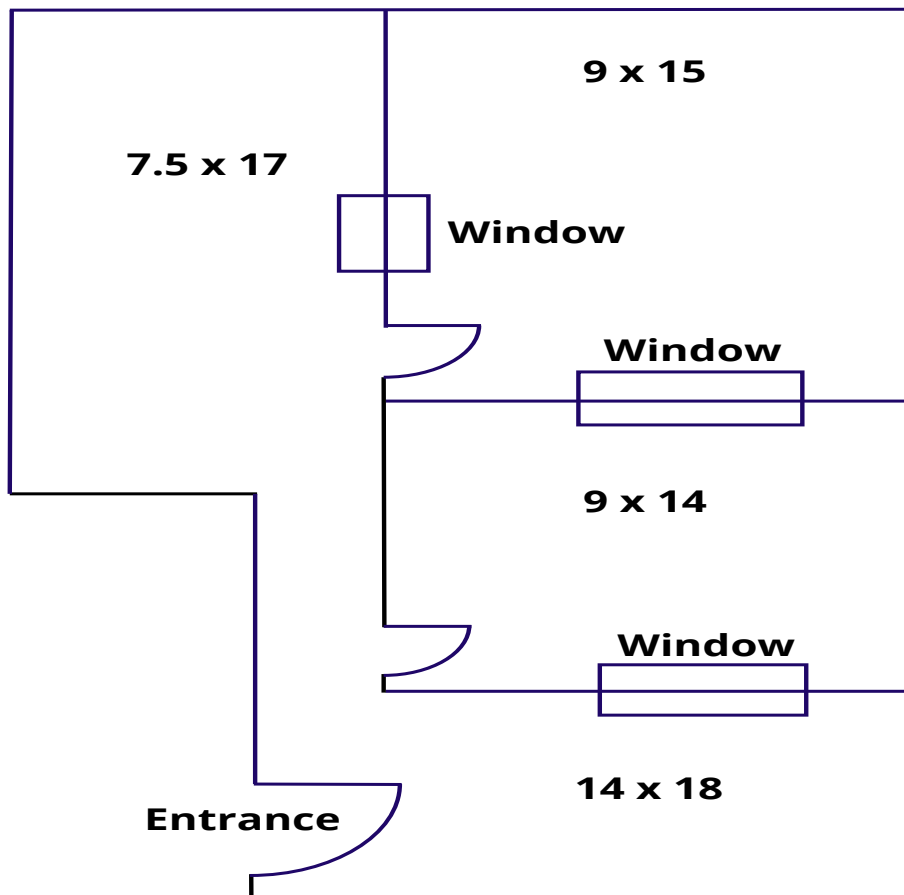
**NEWMARK**  
ASSOCIATES | CRE  
CERTIFIEDWBE

**For Lease**

**Loft 1**



**Office 4**



**7 E. Frederick Place Suite 500 Cedar Knolls New Jersey 07927 | 973.884.4444 | [NewmarkRealEstate.com](https://www.NewmarkRealEstate.com)**

2022 Newmark Associates CRE. Information obtained from sources deemed to be reliable. However, no guarantee, warrant or representation is made as to accuracy of the information presented which is submitted subject to errors, omission, change of price, rental or other conditions, prior sale lease, financing or withdrawal without notice. Projections, opinions, assumptions or estimates are provided for example only, and may not represent current or future performance. Interested parties should consult their tax and legal advisors and conduct a thorough investigation of the property and any prospective transaction.