



FOR SALE MADISON, NJ 100 KINGS ROAD

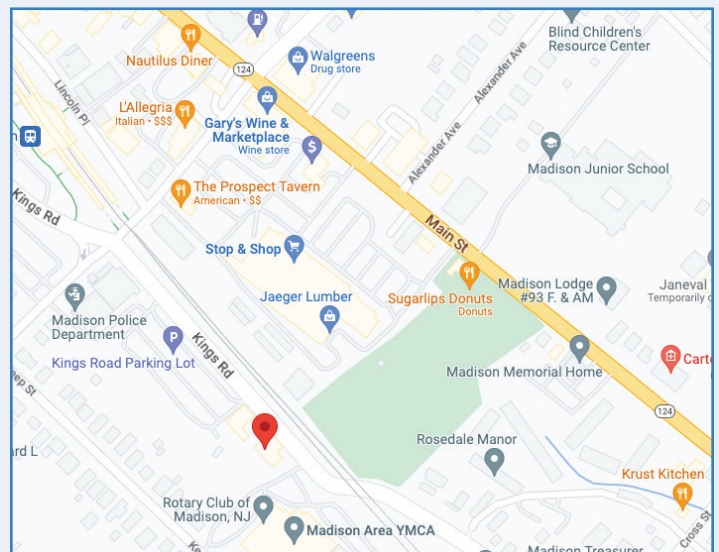
DEVELOPMENT OPPORTUNITY IDEAL FOR OWNER/USER OR DEVELOPER

BUILDING FEATURES

- +/- 7600 sf building on .21 acres
- 2 stories
- Zoning : CBD1
- 1 Block from Madison Train Station
- Accessible from Rt 24/287
- Walking distance to Downtown Madison
- Adjacent to Madison YMCA
- [Click here](#) for Architectural Development Plans

[Call for Pricing](#)

HEART OF MADISON



For more information contact:

MICHAEL TACCETTA

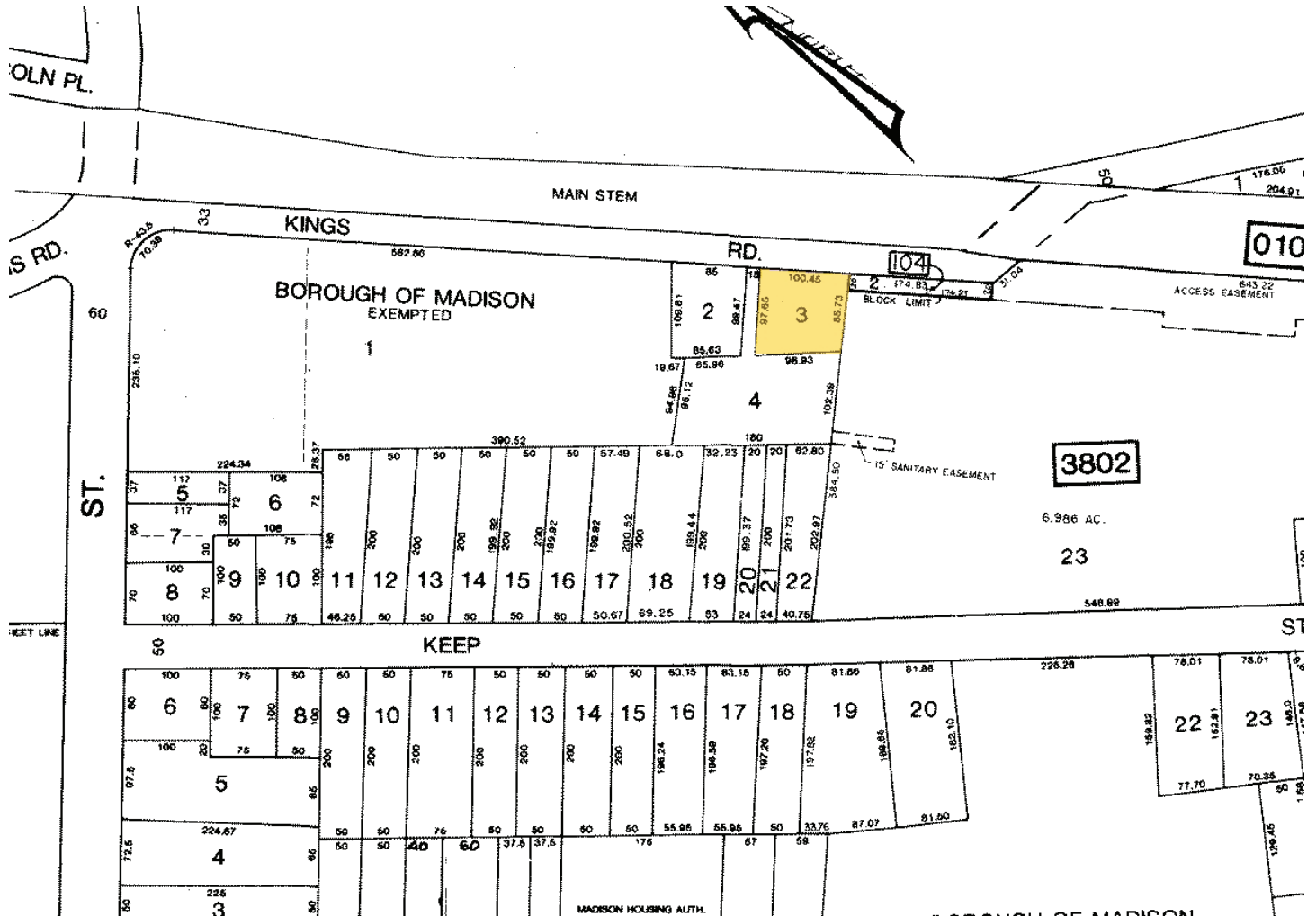
C: 973.525.3737

O: 973.884.4444 ext. 27

mtaccetta@newmarkrealestate.com

NewmarkRealEstate.com | 973.884.4444 | 7 E. Frederick Place Suite 500 Cedar Knolls New Jersey 07927

2023 Newmark Associates CRE. Information obtained from sources deemed to be reliable. However, no guarantee, warrant or representation is made as to accuracy of the information presented which is submitted subject to errors, omission, change of price, rental or other conditions, prior sale lease, financing or withdrawal without notice. Projections, opinions, assumptions or estimates are provided for example only, and may not represent current or future performance. Interested parties should consult their tax and legal advisors and conduct a thorough investigation of the property and any prospective transaction.



For more information contact:

MICHAEL TACCETTA

C: 973.525.3737

O: 973.884.4444 ext. 27

mtaccetta@newmarkrealestate.com

NewmarkRealEstate.com | 973.884.4444 | 7 E. Frederick Place Suite 500 Cedar Knolls New Jersey 07927

2023 Newmark Associates CRE. Information obtained from sources deemed to be reliable. However, no guarantee, warrant or representation is made as to accuracy of the information presented which is submitted subject to errors, omission, change of price, rental or other conditions, prior sale lease, financing or withdrawal without notice. Projections, opinions, assumptions or estimates are provided for example only, and may not represent current or future performance. Interested parties should consult their tax and legal advisors and conduct a thorough investigation of the property and any prospective transaction.