



# MEDICAL SPACE FOR LEASE

## CEDAR KNOLLS, NJ

160 E. HANOVER AVE (UNITS 107 & 112)

### PRIME MEDICAL OFFICE CONDO, MODERN AMENITIES NEAR MORRISTOWN MEDICAL CENTER

#### AVAILABLE SPACE

- Turn-key medical office condo, ready for immediate occupancy
- Approximately 5000 sf
- 11 Exam rooms equipped with sink, cabinetry, changing area
- 1 Procedure room/additional exam room
- 4 Private offices/consultation rooms
- 2 Health extender stations
- 5 Restrooms (3 ADA-compliant)
- Staff break room/kitchenette with private restroom
- Spacious waiting room and reception area
- Business operations space
- Storage closets (office supplies, janitorial supplies, telecom, etc)

#### PROPERTY FEATURES

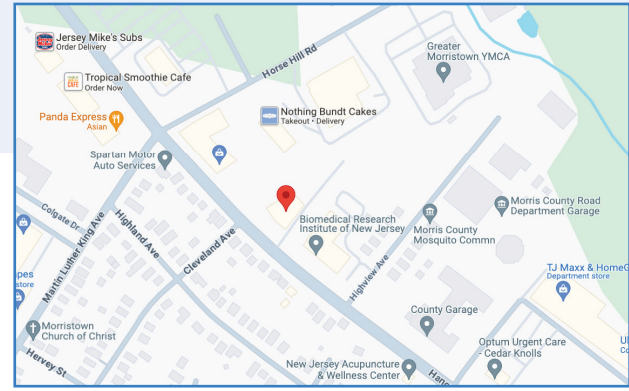
- 8 minutes to Morristown Medical Center
- Well-maintained 2-story building with ample parking and 2 elevators
- Spacious interior floor plan with excellent flow
- 24-Hour access
- Automatic doors to entry lobby
- Covered parking available

[Call for Pricing](#)

For more information contact:

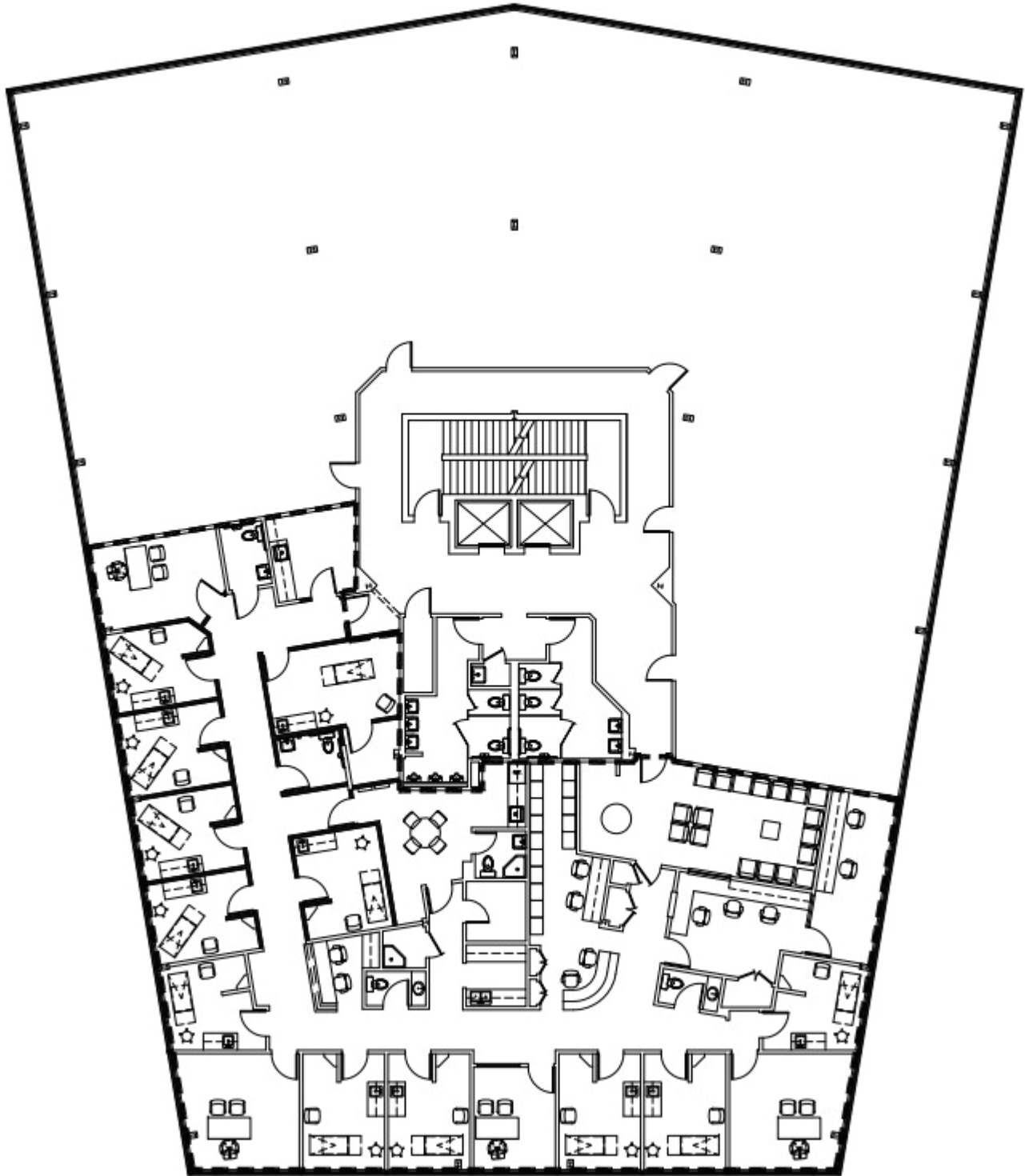
**EBONY PARHAM**  
C: 732.236.6261  
O: 973.884.4444 ext. 29  
[eparham@newmarkrealestate.com](mailto:eparham@newmarkrealestate.com)

**JENNA GLICK**  
C: 201.306.5452  
O: 973.884.4444 ext. 40  
[jglick@newmarkrealestate.com](mailto:jglick@newmarkrealestate.com)



NewmarkRealEstate.com | 973.884.4444 | 7 E. Frederick Place Suite 500 Cedar Knolls New Jersey 07927

2024 Newmark Associates CRE. Information obtained from sources deemed to be reliable. However, no guarantee, warrant or representation is made as to accuracy of the information presented which is submitted subject to errors, omission, change of price, rental or other conditions, prior sale lease, financing or withdrawal without notice. Projections, opinions, assumptions or estimates are provided for example only, and may not represent current or future performance. Interested parties should consult their tax and legal advisors and conduct a thorough investigation of the property and any prospective transaction.



**Floor Plan May Not Drawn to Scale**