



# MEDICAL SPACE FOR LEASE

## WEST ORANGE, NJ

### 960 PLEASANT VALLEY WAY

#### AVAILABLE SPACE

##### Suite 2

- +/- 1,200 square feet
- One private office
- Restroom
- Kitchenette space
- Large collaborative area
- Reception area
- Waiting area
- Purchase option available

#### Call for Pricing

For more information contact:

##### JEANNETTE MELILLO

C: 862.227.6464

O: 973.884.4444 ext. 39

[jmelillo@newmarkrealestate.com](mailto:jmelillo@newmarkrealestate.com)

##### JACK MAIER

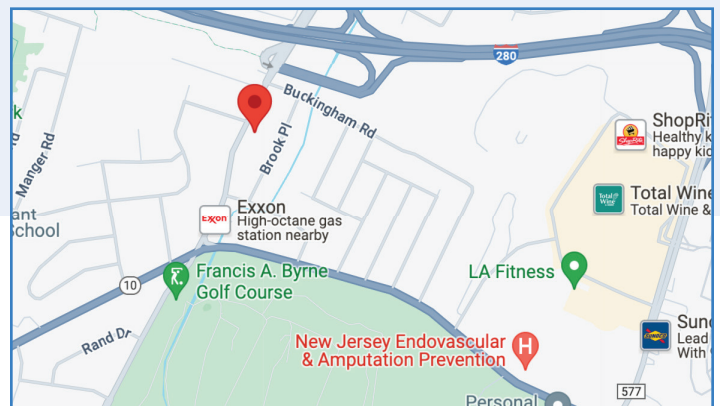
C: 862.200.0763

O: 973.884.4444 ext. 32

[jmaier@newmarkrealestate.com](mailto:jmaier@newmarkrealestate.com)

#### PROPERTY FEATURES

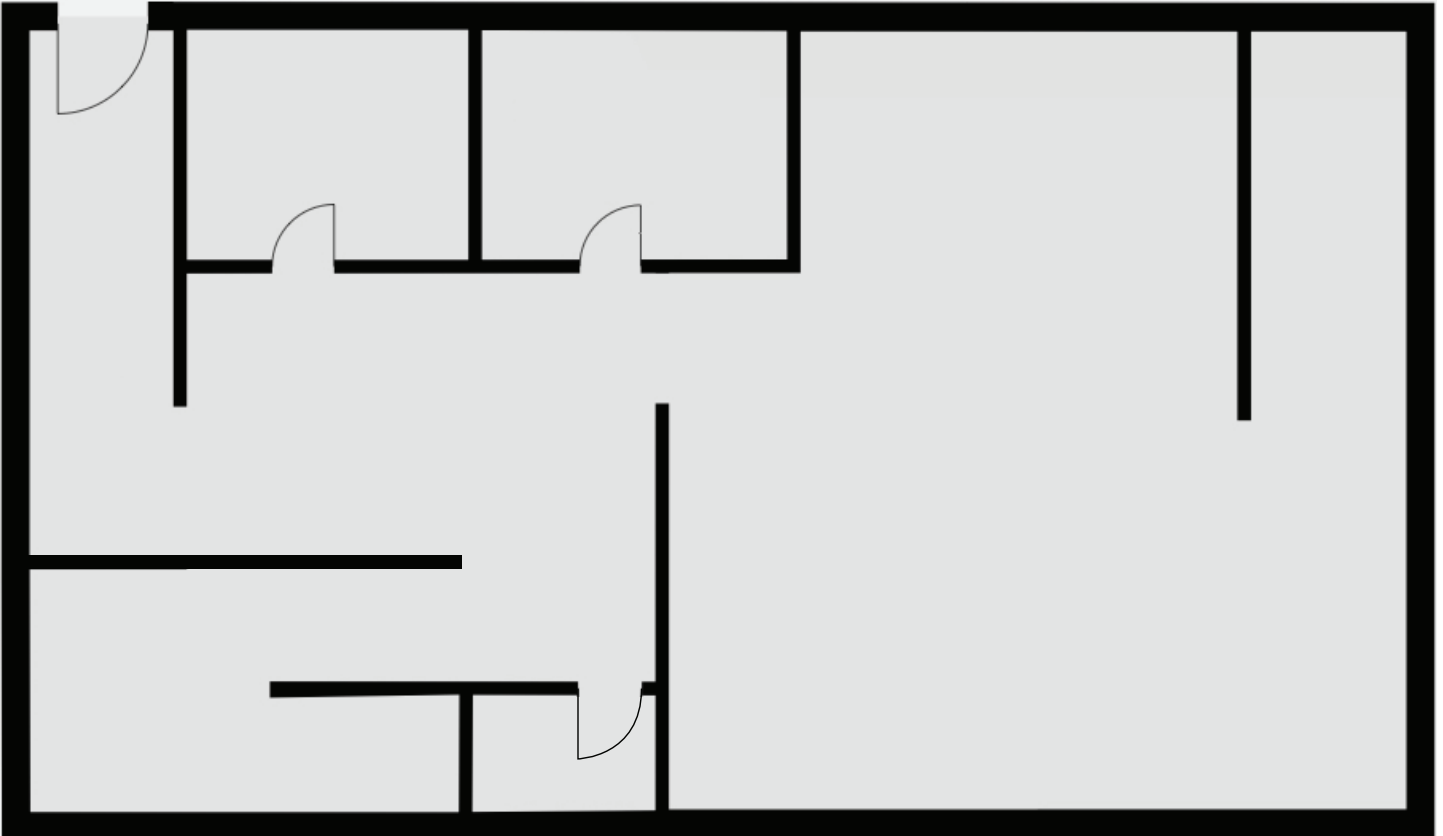
- +/- 7,500 square feet
- Highly visible building
- Prominent building signage
- Ample on-site parking
- Directly off Route 280 and close proximity to Route 10
- Close to restaurants, shopping, and banking
- 20,000 VPD
- [B-2 Zoning](#)



NewmarkRealEstate.com | 973.884.4444 | 7 E. Frederick Place Suite 500 Cedar Knolls New Jersey 07927

2024 Newmark Associates CRE. Information obtained from sources deemed to be reliable. However, no guarantee, warrant or representation is made as to accuracy of the information presented which is submitted subject to errors, omission, change of price, rental or other conditions, prior sale lease, financing or withdrawal without notice. Projections, opinions, assumptions or estimates are provided for example only, and may not represent current or future performance. Interested parties should consult their tax and legal advisors and conduct a thorough investigation of the property and any prospective transaction.

## Floor Plan



**Floor Plan Not Drawn to Scale.**