



FOR LEASE & SALE

**BEDMINSTER, NJ**

2345 LAMINGTON ROAD, UNIT 104

## RARE MEDICAL CONDO OPPORTUNITY | BEDMINSTER, NJ

### AVAILABLE SPACE

- Approximately 1800 square feet
- 5 Exam rooms with plumbing
- 2 Private offices with operable windows
- 2 In-suite restrooms
- Waiting room
- Reception area
- Staff break area
- Separate entry for staff
- ADA-compliant restroom in shared common area

### PROPERTY FEATURES

- Ground-level suite with direct access from the parking lot
- Abundant on-site parking
- Floor plan ideally designed for medical office use
- Easy to access from Routes 202, 206, and 287
- 15 minutes to Robert Wood Johnson University Hospital at Somerset

[Call for Pricing and/or Lease Rate](#)

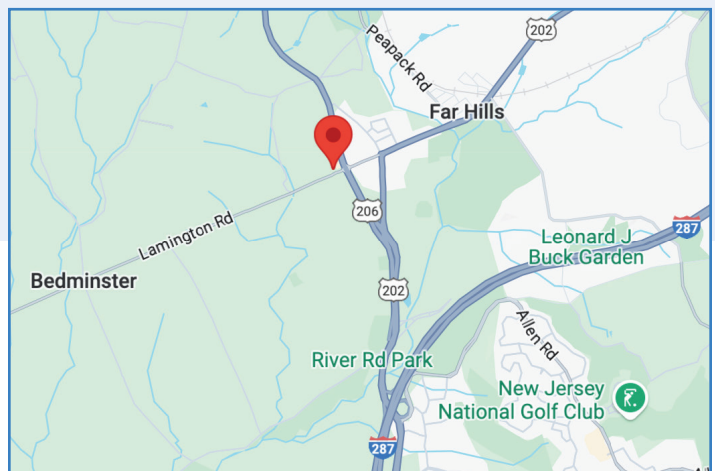
For more information contact:

**EBONY PARHAM**

C: 732.236.6261

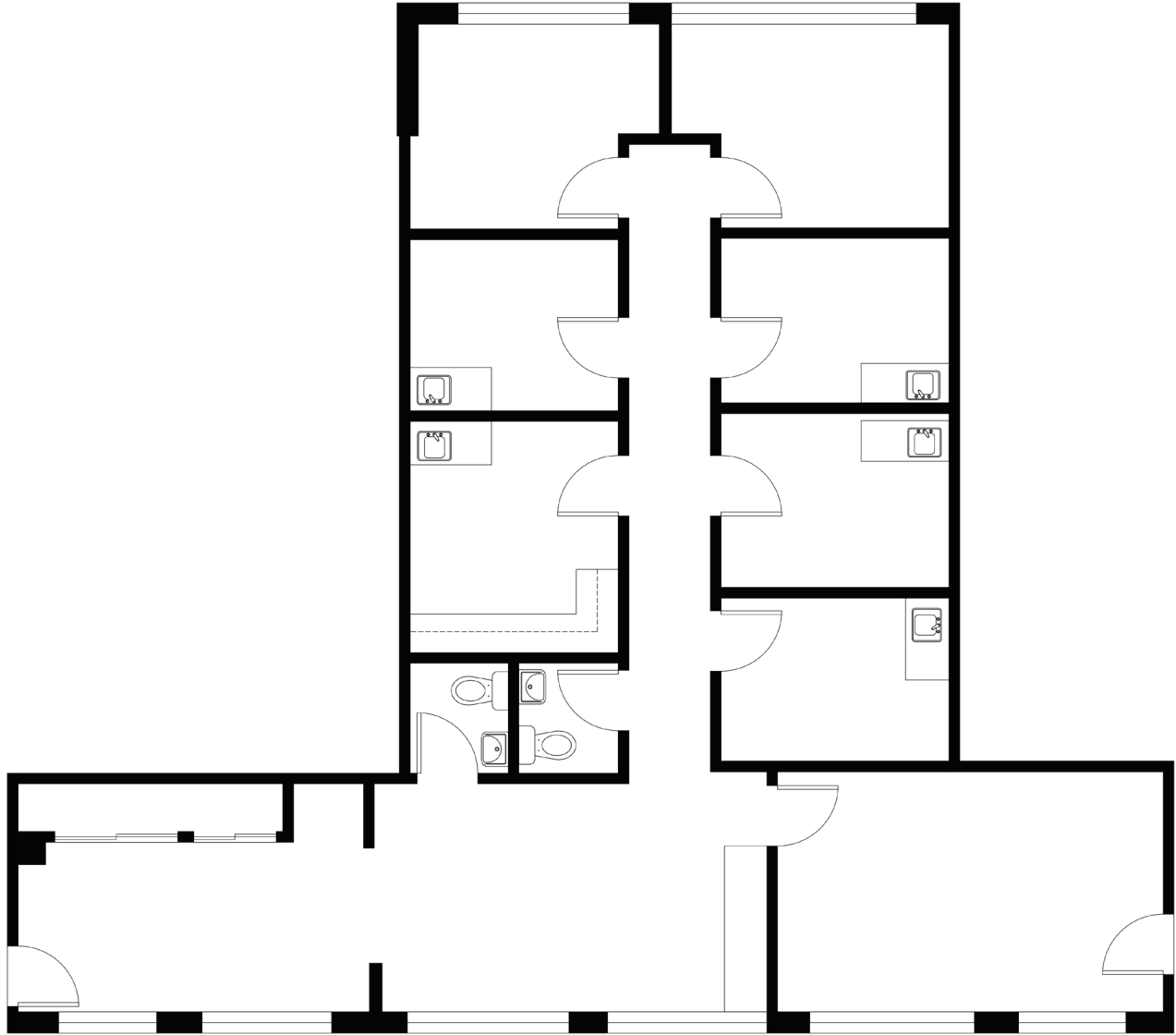
O: 973.884.4444 ext. 29

[eparham@newmarkrealestate.com](mailto:eparham@newmarkrealestate.com)



NewmarkRealEstate.com | 973.884.4444 | 7 E. Frederick Place Suite 500 Cedar Knolls New Jersey 07927

2024 Newmark Associates CRE. Information obtained from sources deemed to be reliable. However, no guarantee, warrant or representation is made as to accuracy of the information presented which is submitted subject to errors, omission, change of price, rental or other conditions, prior sale lease, financing or withdrawal without notice. Projections, opinions, assumptions or estimates are provided for example only, and may not represent current or future performance. Interested parties should consult their tax and legal advisors and conduct a thorough investigation of the property and any prospective transaction.



Floor Plan May Not Drawn to Scale