

FOR LEASE JERSEY CITY, NJ 910 BERGEN AVENUE

ONE BLOCK FROM JOURNAL SQUARE PATH STATION

AVAILABLE SPACES

2nd Floor:

Suite 206-207

- Approx 1800 sf
- Three (3) private offices
- Large bullpen area

Suite 208-209

- Approx 800 sf
- Four (4) private windowed offices

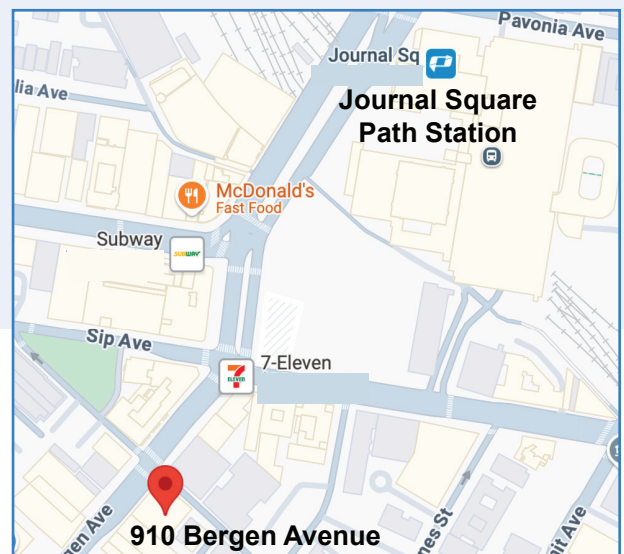
3rd Floor:

- Approx 8300 sf - entire floor available
- Built-out as educational/daycare facility
- Lockers in hallways
- Private restrooms

\$24.00 PSF FULL SERVICE
(All-inclusive rental rate - utilities included!)

PROPERTY FEATURES

- One block from Journal Sq Path Station
- Fully elevated building
- Extra storage space available in basement
- 24 hour access
- Common area restrooms
- Secured property with surveillance



For more information contact:

DAVID YOON

C: 551.486.8076

O: 973.884.4444 ext. 30

dyoon@newmarkrealestate.com

HELENE ELBAUM

C: 201.320.3430

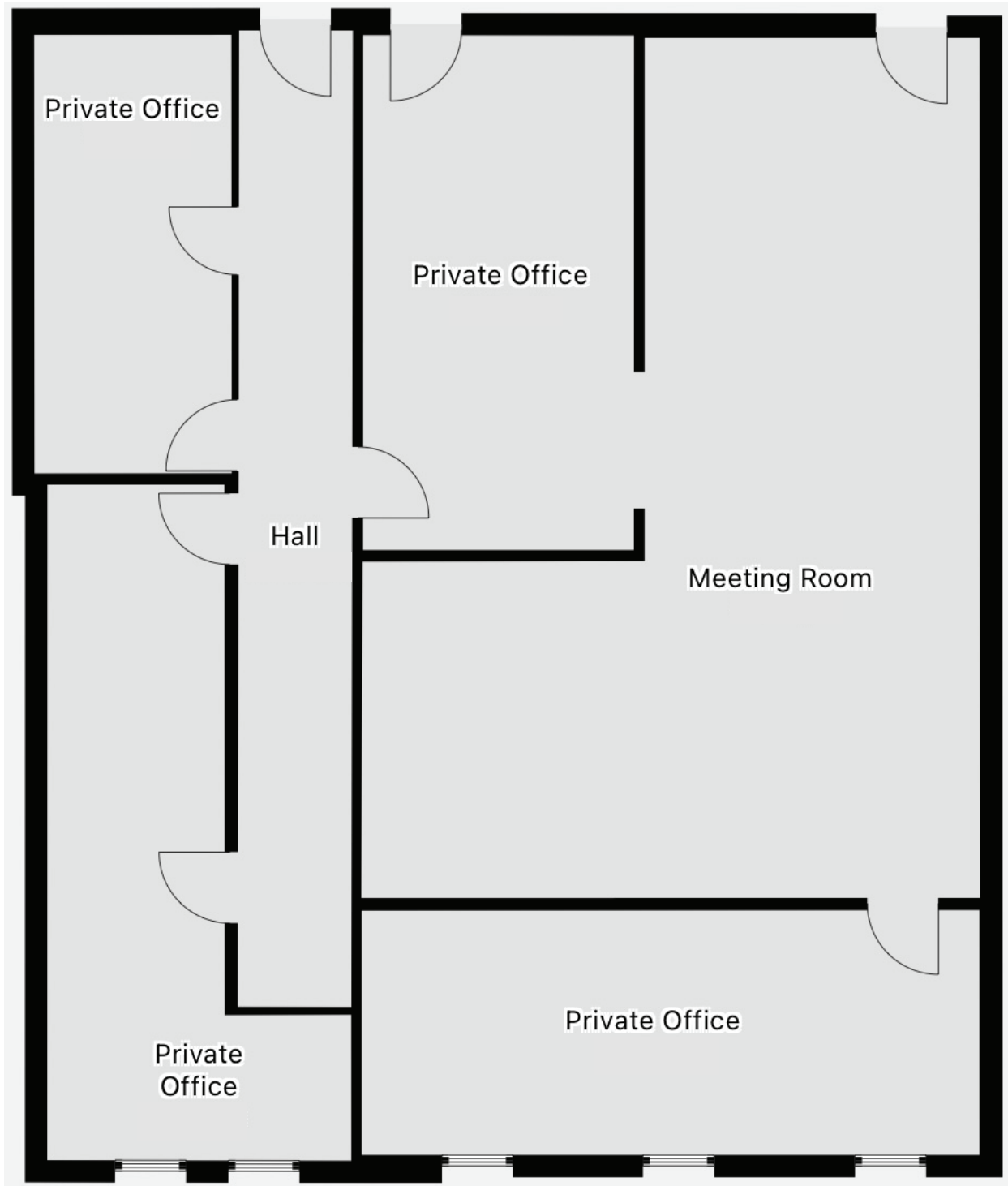
O: 973.884.4444 ext. 26

helbaum@newmarkrealestate.com

NewmarkRealEstate.com | 973.884.4444 | 7 E. Frederick Place Suite 500 Cedar Knolls New Jersey 07927

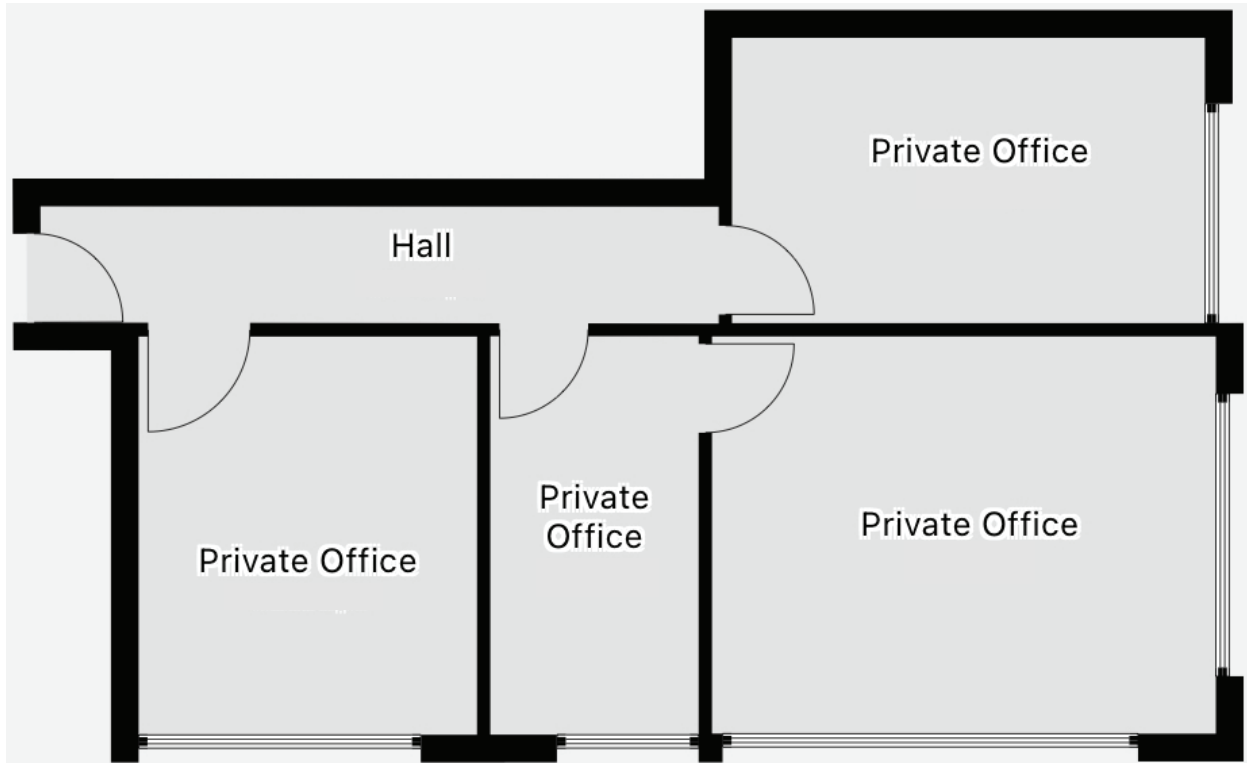
2025 Newmark Associates CRE. Information obtained from sources deemed to be reliable. However, no guarantee, warrant or representation is made as to accuracy of the information presented which is submitted subject to errors, omission, change of price, rental or other conditions, prior sale lease, financing or withdrawal without notice. Projections, opinions, assumptions or estimates are provided for example only, and may not represent current or future performance. Interested parties should consult their tax and legal advisors and conduct a thorough investigation of the property and any prospective transaction.

Suite 206-207



Floor Plan Not Drawn to Scale.

Suite 208-209



Floor Plan Not Drawn to Scale.