

FOR LEASE  
**MORRISTOWN, NJ**  
26 WASHINGTON STREET

## HIGH-END LOFT SPACE, HEART OF MORRISTOWN

### AVAILABLE SPACE

- +/- 1450 sf on the 2nd Floor
- Elevator opens into space
- Twelve (12) ft ceiling height
- Large windows
- Corner space
- Hardwood floors
- Three (3) private offices
- Brick accent wall

**Rental Rate: \$29.00 psf nnn**

For more information contact:

**DOUGLAS GREENBERGER**

C: 516.220.0402

O: 973.884.4444

[dgreenberger@newmarkrealestate.com](mailto:dgreenberger@newmarkrealestate.com)

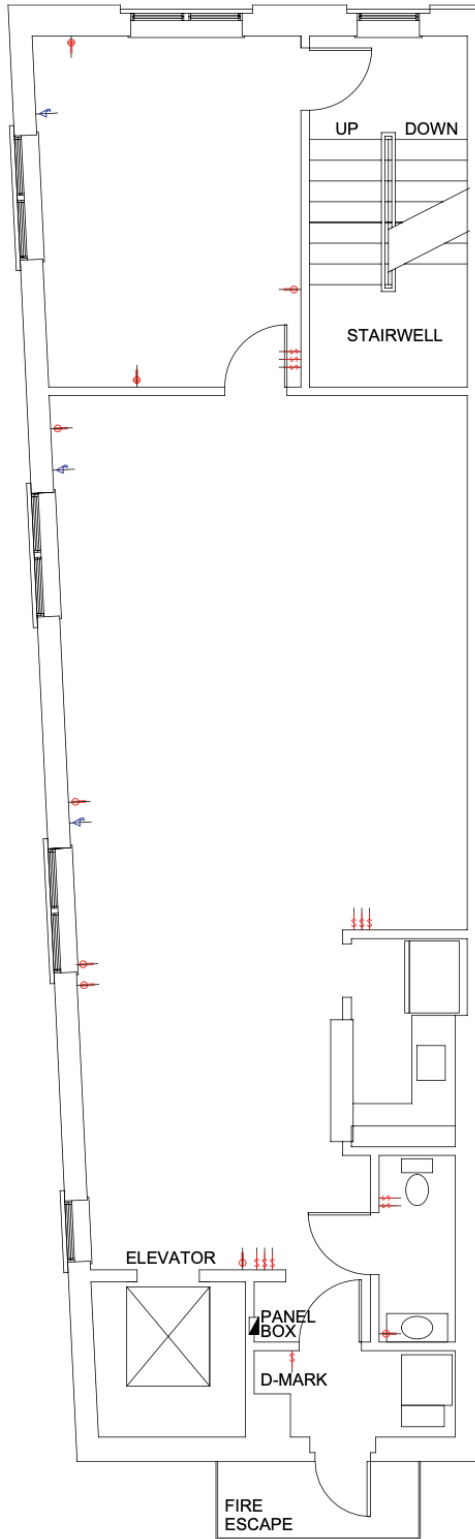
### PROPERTY FEATURES

- +/- 4200 sf Building
- Municipal parking
- Steps to Morris County Court
- One block to Morristown Green
- 24 hour access
- Easy access Routes 287, 24, 80 and 78

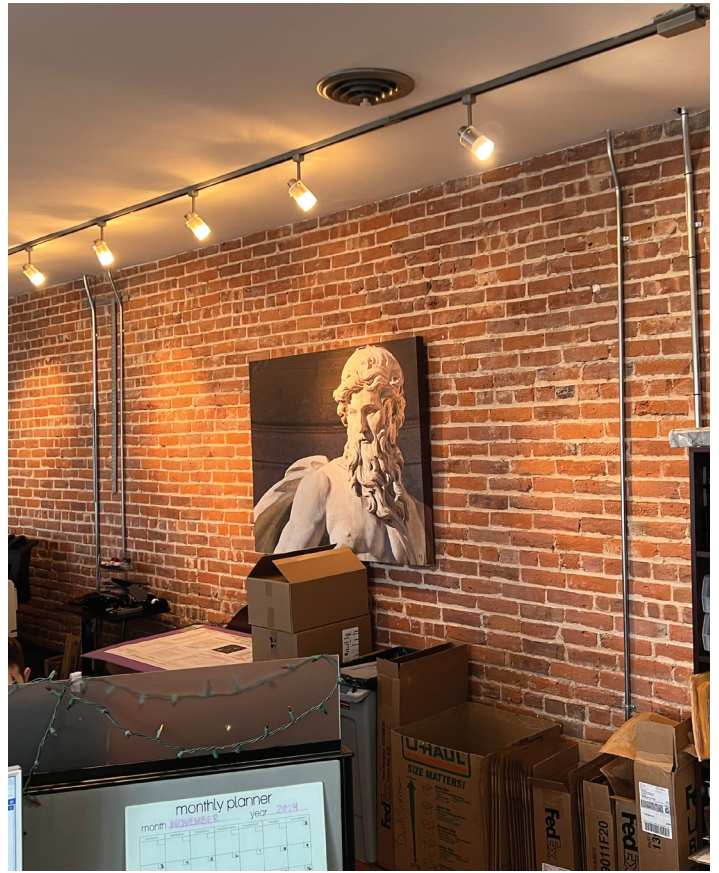
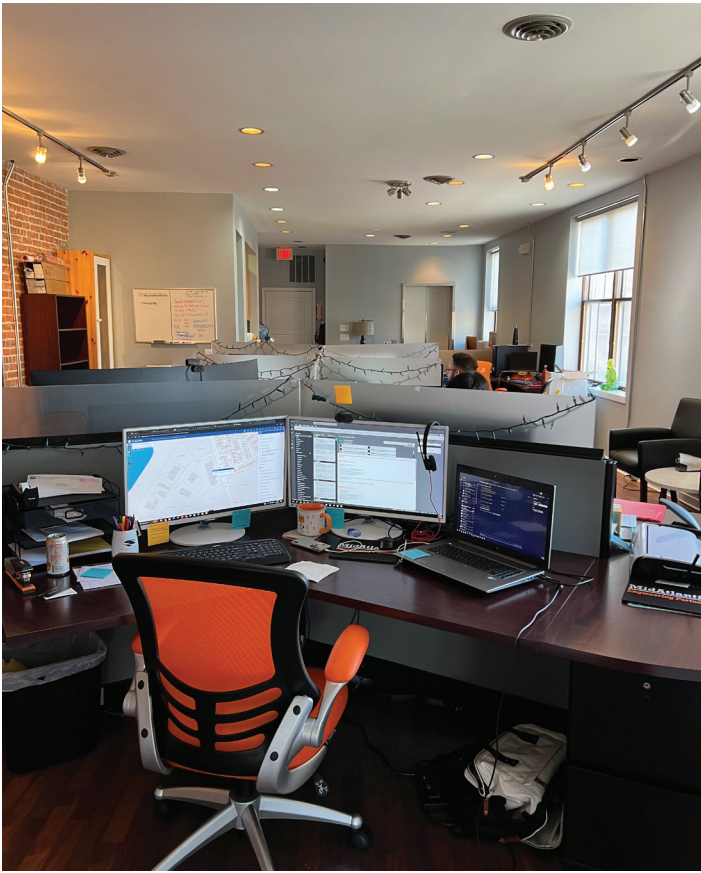


NewmarkRealEstate.com | 973.884.4444 | 7 E. Frederick Place Suite 500 Cedar Knolls New Jersey 07927

2025 Newmark Associates CRE. Information obtained from sources deemed to be reliable. However, no guarantee, warrant or representation is made as to accuracy of the information presented which is submitted subject to errors, omission, change of price, rental or other conditions, prior sale lease, financing or withdrawal without notice. Projections, opinions, assumptions or estimates are provided for example only, and may not represent current or future performance. Interested parties should consult their tax and legal advisors and conduct a thorough investigation of the property and any prospective transaction.



**Floor Plan Not Drawn to Scale.**



NewmarkRealEstate.com | 973.884.4444 | 7 E. Frederick Place Suite 500 Cedar Knolls New Jersey 07927

2025 Newmark Associates CRE. Information obtained from sources deemed to be reliable. However, no guarantee, warrant or representation is made as to accuracy of the information presented which is submitted subject to errors, omission, change of price, rental or other conditions, prior sale lease, financing or withdrawal without notice. Projections, opinions, assumptions or estimates are provided for example only, and may not represent current or future performance. Interested parties should consult their tax and legal advisors and conduct a thorough investigation of the property and any prospective transaction.