



FOR LEASE
KENVIL, NJ
677 ROUTE 46

OWNERSHIP OPPORTUNITY AVAILABLE*

AVAILABLE SPACES

Suite 1: Approx. 1700 sf Non-Clinical Medical

- Reception area
- Four (4) offices
- Open area

Suite 2: Approx 2600 sf Build to Suit

- Design your own suite
- Secondary access points
- Plumbing available

Asking Rental Rate: \$22.00 psf NNN

**Ownership opportunity available. Call for details.*

PROPERTY FEATURES

- Approx. 15,000 sf single story professional medical building
- Monument signage
- ADA compliant
- Abundant parking
- Located at the corner of Route 46 and Berkshire Valley Road
- Near Ledgewood Commons/Walgreens/CVS/Retro Fitness & many food establishments
- Close Proximity to Routes 80/10/15

For more information contact:

JEANNETTE MELILLO

C: 862.227.6464

O: 973.884.4444 ext. 39

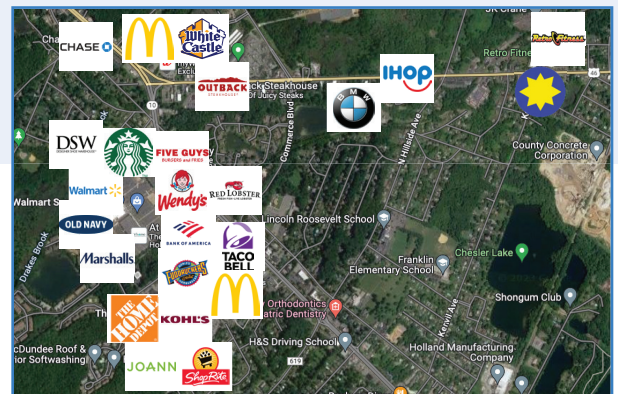
jmelillo@newmarkrealestate.com

HELENE ELBAUM

C: 201.320.3430

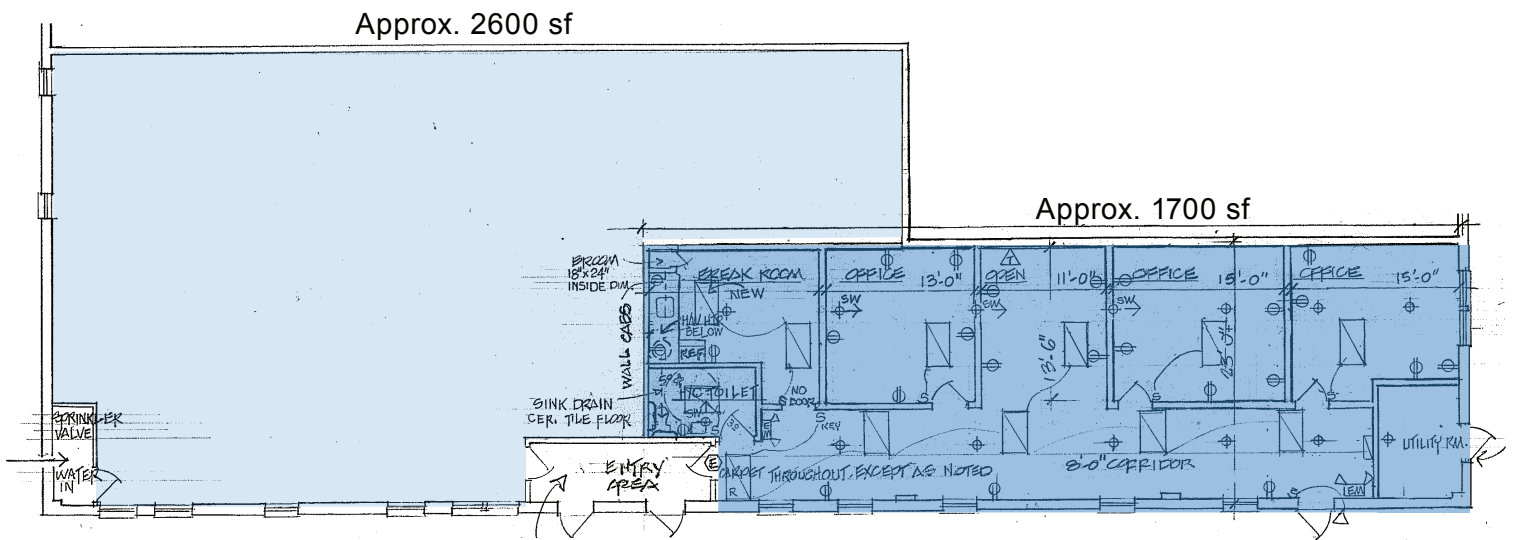
O: 973.884.4444 ext. 26

helbaum@newmarkrealestate.com



NewmarkRealEstate.com | 973.884.4444 | 7 E. Frederick Place Suite 500 Cedar Knolls New Jersey 07927

2025 Newmark Associates CRE. Information obtained from sources deemed to be reliable. However, no guarantee, warrant or representation is made as to accuracy of the information presented which is submitted subject to errors, omission, change of price, rental or other conditions, prior sale lease, financing or withdrawal without notice. Projections, opinions, assumptions or estimates are provided for example only, and may not represent current or future performance. Interested parties should consult their tax and legal advisors and conduct a thorough investigation of the property and any prospective transaction.



Floor Plan Not Drawn to Scale.